



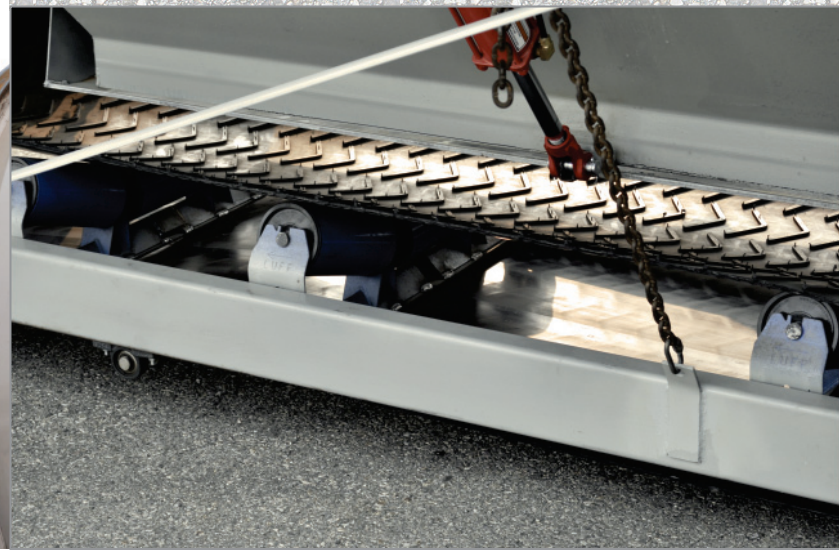
TECHNOLOGIES INC.



- Setup takes under 2 hours
- Portable or permanent configuration
- Built in Canada
- Efficient design proven for over 30 years
- Saves transportation costs
- Fully automated batch control

Call George  
1-403-243-7903

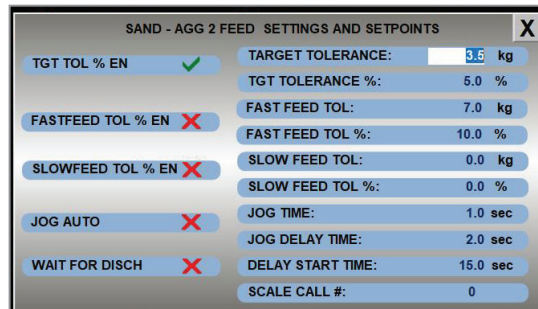
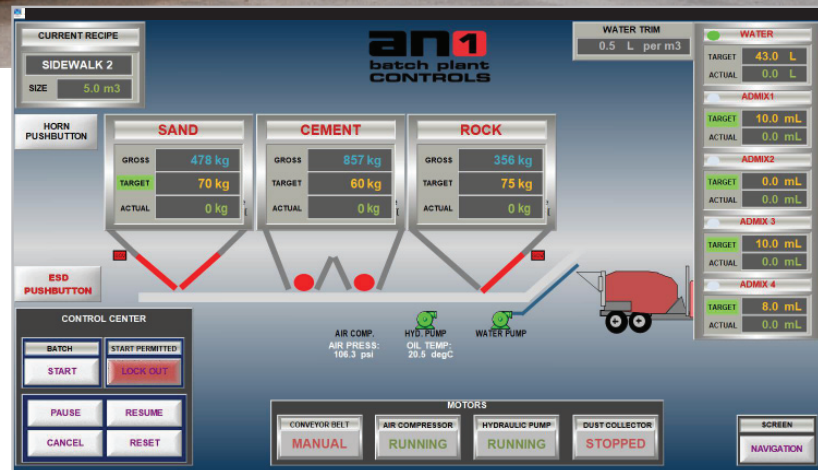
[www.anzeotech.com](http://www.anzeotech.com)





## PORTABLE CONCRETE BATCH PLANT SPECIFICATIONS

- The frame is 45' long, 8' wide and 13' 10" high
- The silo is 8' x 9'
- Cement silo holds 30 tons and aggregate bins hold 30 yard of material each
- All bins rest on electronic load cells, maximum output is 75 cubic yards per hour
- Fully enclosed conveyor
- Equipped with automatic or manual controller
- Air ride suspension with 10 x 20 tires
- Pneumatically operated aggregate gates
- Power service requirements:  
~30 kW, single phase or 3 phase, 120/208 V



Please Inquire:  
George Moravec



info@anzeotech.com

1-403-243-7903 (Calgary)

1-888-220-4666 (Canada Wide)

[www.anzeotech.com](http://www.anzeotech.com)

**anzeo**   
TECHNOLOGIES INC.

Anzeo Technologies Inc. • 412 Manitou Road S.E. • Calgary, Alberta, Canada T2G 4C4