

desna

DESNA CONTROLS & WEIGHING INC.

CANADA'S CHOICE FOR
QUALITY AND SERVICE

CONCRETE & AGGREGATE



desna
ARCHER

Archer – Highly-customizable, highly-scalable batching solutions

ARCHER FEATURES

The Archer Batching is a versatile, efficient control system, cost effective for all concrete and material handling operations.

Desna Controls partnered with JONEL to offer turn-key solutions for all material handling operations. New Desna Archer Batching system stores inventories, tracks product usage, and gives full reports – interfacing completely with office networks for quick data transfers. The operator selects the mix design, quantity, truck, and production starts: few steps from start to finish! Complete automation allows rapid and efficient production without sacrificing user control. The Archer Batching is serviced by Desna's excellent technical support available on the Internet or by telephone, 24-hours a day, 7 days a week.



RESULTS DRIVEN **CONCRETE SOLUTIONS**
JONEL

Archer Batching

Highly-customizable, highly-scalable batching solutions

Archer Clutch

Business resource management system for mobile applications

Archer Daily Insight

Business intelligence platform measuring performance

Archer Enterprise

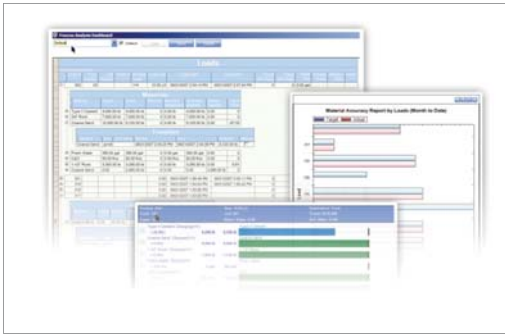
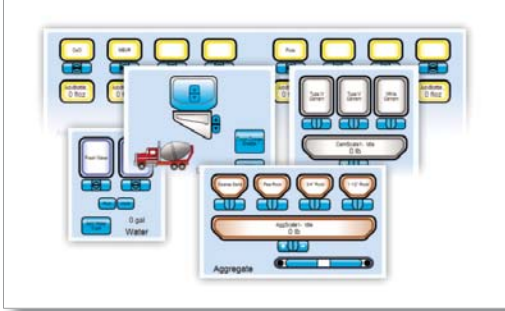
Unlimited access dispatch system for handling difficult areas



Desna's Archer Batching system is suitable for all material handling operations

ARCHER BATCHING

Information technology features



Executive-level features

- Multiple language support for each client
- Unlimited amount of mix designs
- Supports large, complex plants with ease
- Support services via Internet or on site
- Migration pathways from Jonel and competitive controls
- Control your plant from any computer on the Internet
- Multiple maintenance plan options
- Integrated reporting
- In-depth auditing
- ADO.NET to enable any database back end
- Integrated PLC for speed
- Client/Server architecture to enable access from any networkable device
- Open database platform
- Communicates with dispatch systems using industry standard protocol
- Windows based
- Real-time/Same batch moisture control
- Touch screen compatible
- Ability to control specific user permissions via administrator tool
- Written in C#
- Vector graphics to render cleanly at any size monitor resolution
- Microsoft .NET
- SQL Server Express bundled for free



PRODUCTIVITY

ARCHER CLUTCH

Mobile and GPS Solutions

- Access to the critical dispatch screens in real time, from mobile phone.
- Sends alerts throughout the day about any problems, such as late deliveries, slow-pouring customers and more
- Utilizes cell phones equipped with GPS technology to automatically notify dispatchers of delivery status changes



- Highlights inaccuracies in scheduled dispatch parameters such as load time, travel time, and pour time to the drivers to promote better communication between dispatch and the job site.

ARCHER DAILY INSIGHT



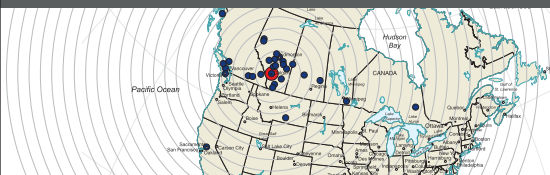
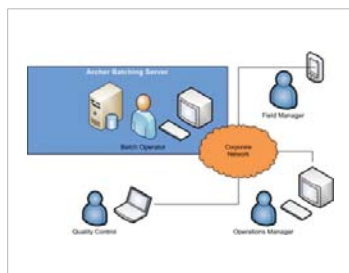
Cost Effective Evaluation Tracking

- Streamlines business processes and lower delivery costs
- Trains field staff how to implement changes that increase efficiencies related to the call out schedule, daily dispatch practices, and order negotiation techniques
- Measures performance all the time with web-based reporting tool that gives a detailed assessment, provides monthly check-ups

ARCHER ENTERPRISE

Unlimited Dispatching System

- Optimization of all operational processes
- Managing resources, technology and business processes in most effective way
- Scalable system for any size of company operations



Desna Controls & Weighing Inc.
412 Manitou Road S.E.
Calgary, Alberta, Canada T2G 4C4