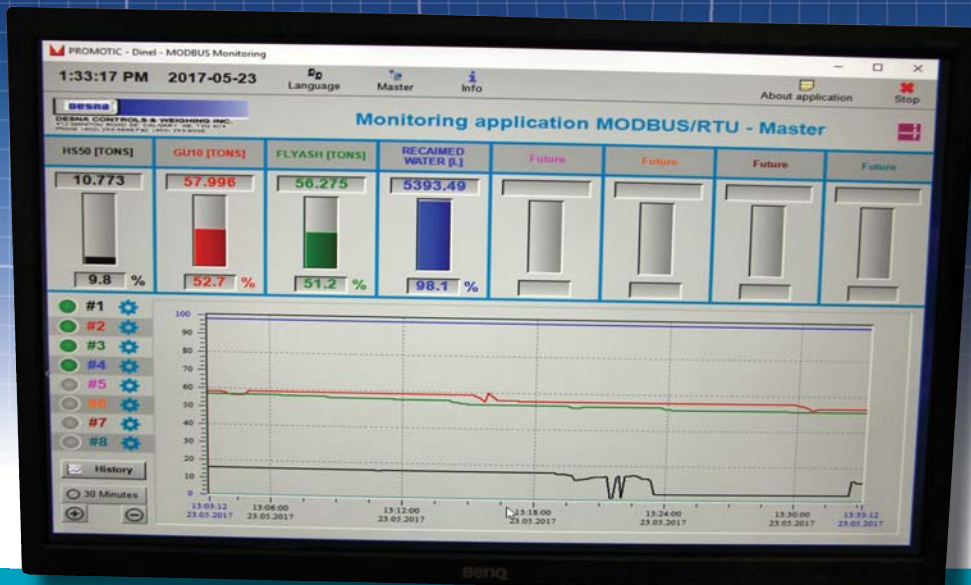


**desna**



# level sensors



## Continuous Level Sensors

- Radar level sensors
- Ultrasonic level sensors
- Capacitive level sensors
- Capacitive level sensor for diesel
- Submersible hydrostatic level sensors

## Desna Controls Level Sensors

Desna Controls offers a full line of level sensors. We have many sensors and display units in stock, please inquire:

[info@desnacontrols.com](mailto:info@desnacontrols.com)

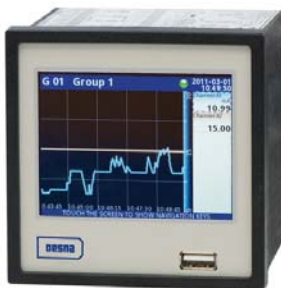
1-403-243-4848 (Calgary)

1-888-220-4666 (Canada Wide)



## Display Units

- Programmable display units PDU
- Multifunction graphical unit
- Local process indicator
- Basic SCADA systems



## Power Supply and Switches

- Universal DC stabilized power supply and switching units
- Intrinsically safe supply units
- Isolating repeater
- Universal stabilized power supplies

## Limit Level Sensors

- Ultrasonic level sensors
- Capacitive level sensors
- Capacitive level switch
- Capacitive level sensors
- Submersible level sensor
- Thru-wall level switches
- Flexible level sensor
- Capacitive proximity switches
- Conductive probes
- Level control relay
- Capacitive touch sensor
- Float system



CALL:  
1-888-220-4666 (CANADA WIDE)  
OR  
1-403-243-4848



Desna Controls & Weighing Inc.  
412 Manitou Road S.E.  
Calgary, Alberta, Canada T2G 4C4  
[sales@desnacontrols.com](mailto:sales@desnacontrols.com)

## TECHNICAL SPECIFICATIONS— LEVEL METER

Supply voltage	GRLM-70N-__ GRLM-70Xi-__ GRLM-70Xd-__	18 ... 36 V DC 18 ... 30 V DC 18 ... 36 V DC
Output		4 ... 20 mA, HART®
Current consumption		4 ... 20 mA / max. 22 mA
Basic error <sup>1)</sup> (for reference reflector) - GRLM-70_-20 in area 0,1 – 0,2 m / 0,2 – 2,0 m / 2,0 – 40 m .....- other types in area 0,1 – 0,2 m / 0,2 – 2,0 m / 2,0 – 40 m		± 5 mm / ± 3 mm / ± 2 mm ± 10 mm / ± 4 mm / ± 2 mm
Resolution		1 mm
Maximal length of measuring electrode	GRLM-70_-10 GRLM-70_-11 (12) GRLM-70_-20 GRLM-70_-30 (33, 34, 35) GRLM-70_-32	8 m 2 m 3 m 40 m 12 m
Dead zone <sup>2)</sup> - for measuring sensitivity - low, medium, user (1 - 4) - high, user (5) - user (6, 7) - user (8)		100 / 0 mm <sup>3)</sup> 150 / 50 mm <sup>3)</sup> 200 / 50 mm <sup>3)</sup> 250 / 50 mm <sup>3)</sup>
Electrical parameters for variants Xi (XiT) – max. internal values		U <sub>i</sub> =30 V DC; I <sub>i</sub> =132 mA; P <sub>i</sub> =0,99W; C <sub>i</sub> =370 nF; L <sub>i</sub> =0,9 mH
Measurement sensitivity (8 degrees)		low (1) - medium (3) - high (5) - user (1 - 8)
Failure indication (echo loss, internal failure)		Adjustable in modes: 3,75 mA, 4 mA, 20 mA, 22 mA, LAST <sup>4)</sup>
Damping		1 .. 99 s
Warm up time		cca 60 s
Internal resistance / Electric strength (Electrode - Housing)		10 kΩ
Coupling capacity / Electric strength (Housing - Supply leads)		5 nF / 500 V AC
Maximal current output load resistance for	U = 24 V DC U = 22 V DC U = 20 V DC	R <sub>max</sub> = 270 Ω <sup>5)</sup> R <sub>max</sub> = 180 Ω R <sub>max</sub> = 90 Ω
Maximum tensile strength of the rope electrode		1400 kg
Protection class		IP67
Process connection		screwing with thread G1"
Recommended cable		PVC 2 x 0,75 mm <sup>2</sup>
Weight (without electrode)		cca 0,5 kg (1 kg variant NT, XiT)

1) Error is larger at the beginning and end of the rod or rope electrode. More detailed informations can be found in the instruction manual.

2) Dead zone = Blind zone = Blocking distance

3) The length of dead zone at the beginning/at the end of the electrode. (The length of dead zone is 110 mm at the end of rope electrode.)

4) Level meter displays last measured value.

5) Including 250R resistor in case of HART connection.

For more information call:



**DESNA CONTROLS & WEIGHING INC.**  
412 Manitou Road S.E., Calgary, AB T2G 4C4  
Phone: 403-243-4848 sales@desnacontrols.com  
[www.desnacontrols.com](http://www.desnacontrols.com)